



AMANN GIRSCHBACH

SPEED AND PRECISION
IN HARMONY.

 **ceramill[®] map+**



THE INHOUSE MOVEMENT[®]

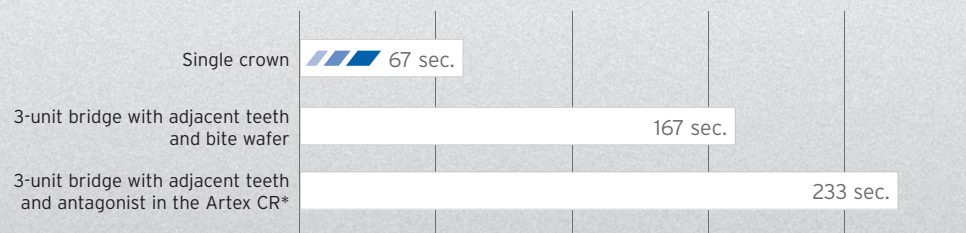
„DNA SPEED SCANNING“ - SPEED AND PRECISION IN HARMONY.

Scan accurately to within 6µm with a 50% saving in time - the Ceramill Map 200 and 400 stripe-light scanners digitalise patient data both quickly and precisely using “DNA Speed Scanning”. It is the result of a continuously further developed scan workflow in which the scanning and matching processes were optimally routinised, thus significantly contributing to an efficient, economic workflow. The compact laboratory scanners are integral components of the Ceramill CAD/CAM system, which forms seamlessly interlocking system components into an efficient process chain of unparalleled precision and economy.

Full arch
scan:
24 sec.

Scan
accuracy:
6 µm

“ENTIRE SCAN PROCESS DURATION” (INCLUDING MATCHING)



*can only be digitalised using Map 400



THE “FUNCTIONAL SCANNER” WITH SPLITEX INTEGRATION

High-resolution scan data, quickly and precisely – this is provided by the fully automatic Ceramill Map 400 stripe-light scanner thanks to highly sensitive 3D sensors and a sophisticated, newly developed “DNA Speed Scanning” strategy. It reduces scan times by up to 50 % with constantly high precision. A full arch scan with unlimited usable results is possible in only 24 seconds using speed scanning. Furthermore, the scanner with Splitex integration offers a number of valuable and convincing scanning options such as the digitisation of Triple Tray impressions and textures in colour, recording correct positioning of up to 12 stumps (M-Die), as well as quadrant models including individual stumps in just a single scanning process (All-In Scan).

Ceramill Map 400+ creates open stl data.

- _Full arch scan with unlimited usable results in only 24 seconds thanks to DNS Speed Scanning**
- _Highly precise digitalisation of models in intermaxillary relationship**
- _Versatile (e.g. impressions , models, Multi Die, All-In, texture scans)**
- _Universal carrier plate enables flexible scanning of very different model systems**
- _Individually adaptable scan sequence**



SPEED MEANS NOTHING WITHOUT THE PERFECT FIT!

1:1 transfer of the model situation from the “real articulator” into the scanner is absolutely essential to utilise the functionality of the virtual articulator. The Ceramill system enables correct transfer using the Ceramill Transferkit - a combination of transfer stand (Ceramill Fixator) and model holder on a Splitex base, which is used for holding the scan model in the scanner. The Ceramill Fixator enables transfer of the model in the scanner while retaining the axis relation of the “real articulator”.

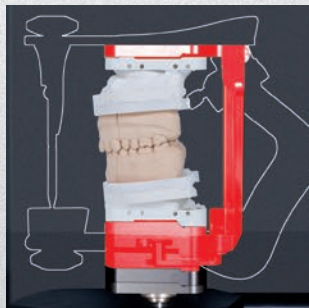
_Transferring the articulated situation in Ceramill Fixator without loss of precision

_Maximum precision due to patient analogous working

_Scanning in Splitex precision with exact patient data



Articulated models in the Ceramill Fixator and Artex CR. The models were synchronised using the Splitex key



Ceramill Fixator with articulated model in the Ceramill Map 400 (Symbol illustration of the Ceramill Fixator)



Ceramill Map 400 with model in the Ceramill Fixator - for lossless transfer of the model situation



**DNA
Speed
Scanning**

**up to 50 %
time saving**

ENTRY-LEVEL SCANNER - COMPACT, PRECISE, QUICK

Ceramill Map 200 is a fully automatic stripe-light scanner offering uncomplicated handling with high precision, making it ideal for an introduction to CAD/CAM technology or for all users who want to produce precise scan data cost-effectively. Equipped with newly developed "DNA Speed Scanning" strategies and high-resolution 3D sensors, it matches the bigger version Ceramill Map 400 in terms of precision and speed. In combination with the automatic user guidance the Ceramill Map 200 unites convenience and precision on a compact footprint of 390x360x310 mm.

Ceramill Map 200 has an open interface, so that scans (STL files) can also be loaded in other CAD programmes.

_Maximum precision with minimum footprint

_ "DNA Speed Scanning" reduces scan times by up to 50 %

_Open interface and automatic user guidance



OVERVIEW OF FUNCTIONS AND ACCESSORIES FOR CERAMILL MAP 200+ AND 400+

IMPRESSIONS



Triple Tray holder with tilt mechanism - for all Ceramill Map 200/400 models

ALL-IN



Digitalise quadrant models and single stumps in a single scanning step

TEXTURES



Texture scan in colour - captures coloured markings and auxiliary lines on the models

SCANNING IN INTERMAXILLARY RELATIONSHIP



Digitisation of models with jaw relation

MULTI DIE



Scanning up to 12 stumps and assigning the correct jaw position in one run with the Ceramill M-Die

FLEXIBLE SCANNING



Universal carrier plate for flexible scanning of a host of different model systems

TECHNICAL DATA

	ceramill® map 200	ceramill® map 200+	ceramill® map 400	ceramill® map 400+
Dimensions D/W/H (mm)	390 x 360 x 310	390 x 360 x 310	465 x 515 x 585	465 x 515 x 585
Weight	11kg	11kg	35 kg	35 kg
Electrical connected value	100-240 V, 50/60 Hz	100-240 V, 50/60 Hz	100-240 / 2 x 1,25	100-240 / 2 x 1,25
Electrical fuse			T 2 x 1,25A	T 2 x 1,25A
Output (W)	60	60	80	80
Accuracy (µm) according to DIN EN ISO 12836:2013-01	6	6	6	6
Accuracy (µm) implant bars:	10	10	10	10
Axes	2	2	2	2
Recommended installation site	Table, no direct sunlight	Table, no direct sunlight	Table, no direct sunlight	Table, no direct sunlight
Full arch scan (sec.)	24	24	24	24
Single die with Ceramill Multi Cap (sec.)			4,5	4,5

SCAN FEATURES AFTER UPDATE

DNA Speed Scanning	○	○	○	○
Scanning in jaw relation			○	○
Universal model scan	○	○	○	○
All-In*	○	○	○	○
Multi Die*	○	○	○	○
Impressions*	○	○	○	○
Texturen*	○	○	○	○
Colour scan		○		○
Open scanning	○	○		○
Guarantee	2 years	3 years	2 years	3 years

*additional items must be purchased for these features

ORDERING INFORMATION

Ceramill Map 200+

179130NC Ceramill Map 200+

Ceramill Map 400+

1179140NC Ceramill Map 400+

AUSTRIA (HEADQUARTERS)

Amann Girrbaach AG
Koblach, Austria
Fon +43 5523 62333-105
austria@amanngirrbaach.com

GERMANY

Amann Girrbaach GmbH
Pforzheim, Germany
Fon +49 7231 957-100
germany@amanngirrbaach.com

NORTH AMERICA

Amann Girrbaach North America, LP
Charlotte, NC, U.S.A.
Fon +1 704 837 1404
america@amanngirrbaach.com

BRASIL

Amann Girrbaach Brasil LTDA
Curitiba, Brasil
Fon +55 41 3287 0897
brasil@amanngirrbaach.com

ASIA

Amann Girrbaach Asia PTE LTD.
Singapore, Asia
Fon +65 6592 5190
singapore@amanngirrbaach.com

CHINA

Amann Girrbaach China Co., Ltd.
Beijing, China
Fon +86 10 8886 6064
china@amanngirrbaach.com